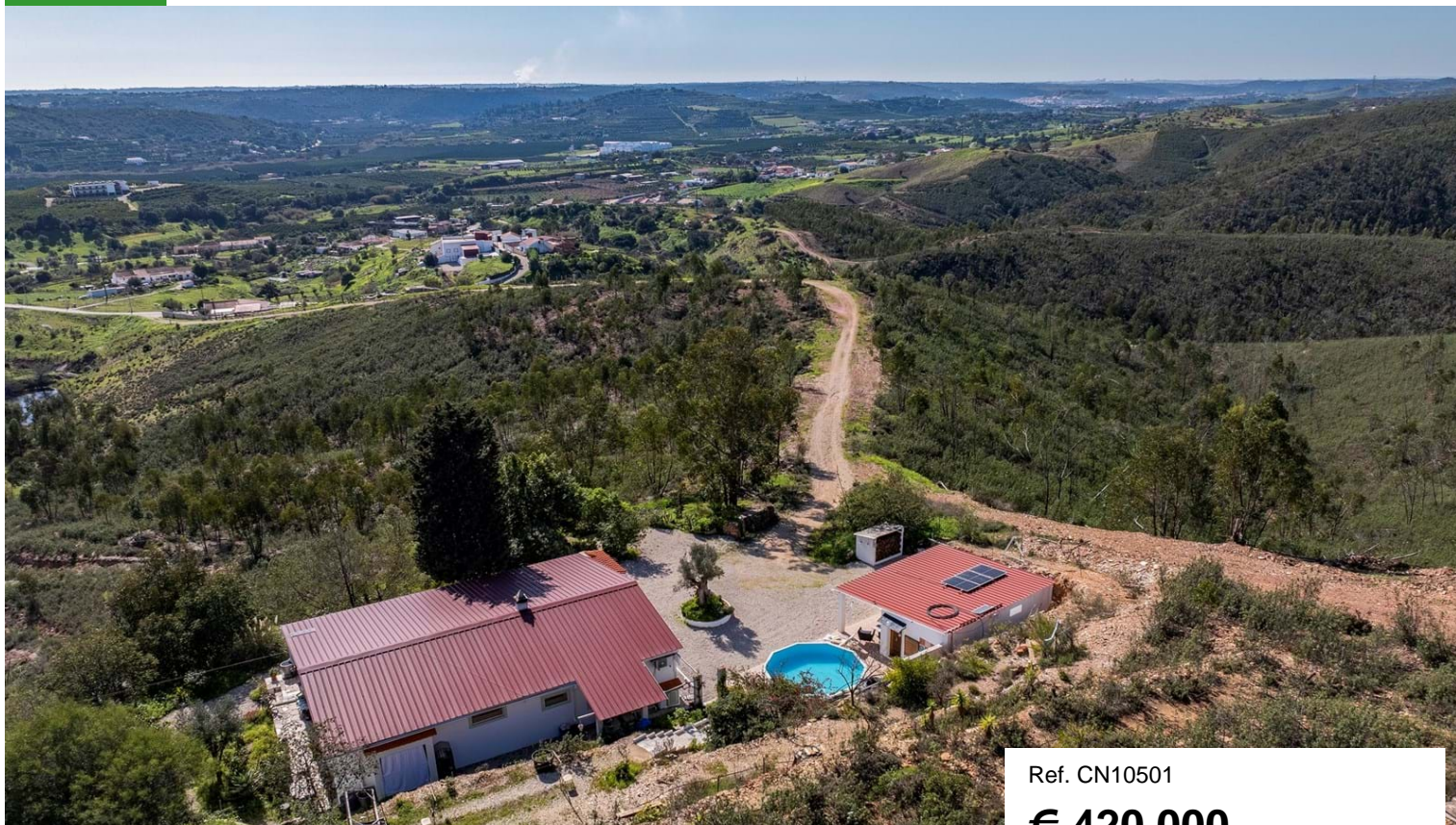




Pedreira de Santo Estevão



Ref. CN10501

€ 420,000

Property features

- Water Heating: Solar panels
- Aircon: Individual
- Fireplace: Wood burner
- Equipped kitchen
- Storage / utility room
- Covered terrace
- Garden: Landscaped
- Water: Borehole, Cistern
- Sewerage: Septic tank
- Gas: Bottle
- Windows: Double glazed
- Parking: Garage, Exterior

This charming bungalow, set atop a hill just a 7-minute drive east of Silves, offers breathtaking views over the valleys stretching to Silves. The south-facing porch, running along the front of the house, provides stunning panoramas, as well as the lounge and main bedroom. Featuring two bedrooms, two bathrooms, and a beautiful modern open-plan breakfast kitchen. The home has been updated over the years for comfort and style. There is a garage, plenty of parking space, and a small annex with a covered terrace offers potential for a guest room or office. A perfect retreat in a serene location with incredible views.

Location	Pedreira de Santo Estevão
Year built	1990
Bedrooms	2 (T2 +1)
Bathrooms	2
Built area	152 m ²
Plot area	10810 m ²
Electricity	Other
Energy Cert.	



www.cerronovo.com

Soc. Med. Imobiliária, Lda. AMI 860

T. +351 289 510 790 (National fixed network call)

sales@cerronovo.com

